

State of Wyoming Corner Record

(In compliance with the **CORNER PERPETUATION AND FILING ACT**, Wyoming Statutes, 1997 Section 33-29-140 et. seq., and the Rules and Regulations of the Board of Professional Engineers and Professional Land Surveyors)

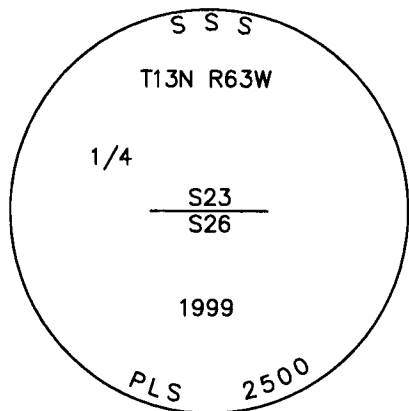
Reverse side of this form may be used if more space is needed.

ORIGINAL RECORD: "SET A WHITE SANDSTONE 18X10X8 INS. FOR 1/4 SECTION CORNER."

FOUND: 2-1/2" ALUMINUM CAP STAMPED "PLS 2500 1999" AT FENCE CORNER, AND PK NAILS IN SQUARE WOOD FENCE POSTS FOR REFERENCE MONUMENTS.

SET: NOTHING.

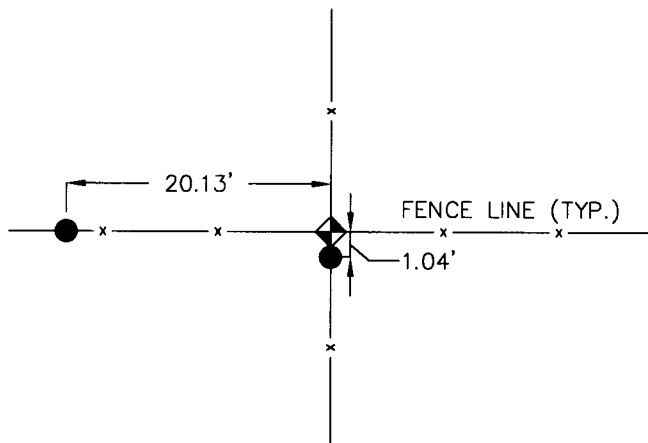
NOTE: BEARINGS AND DISTANCES HEREON ARE BASED ON UTM ZONE 13F - NAD83/NAVD88 AND ARE SHOWN AT GRID. IN ORDER TO OBTAIN GROUND DISTANCES USE A COMBINED SCALE FACTOR OF 1.0006282796.



Monument Inscription



N.T.S.



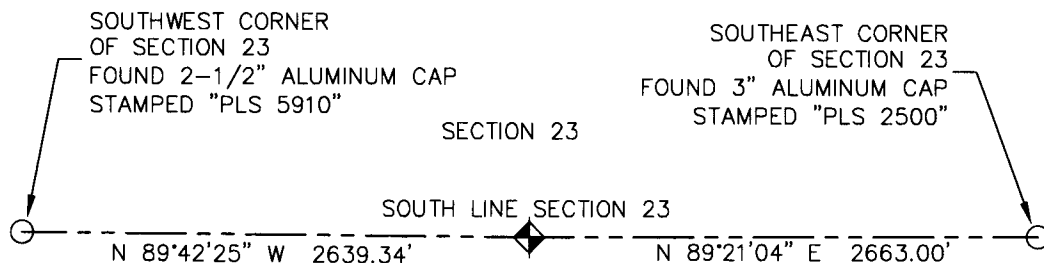
Reference Monument Location



= SOUTH QUARTER CORNER OF SECTION 23
FOUND 2-1/2" ALUMINUM CAP STAMPED "PLS 2500 1999"



= FOUND PK NAILS IN FENCE POSTS



Monument Location

Date of Field Work: 05/31/2012

Office Reference: Project #50812

Cross Index Plat

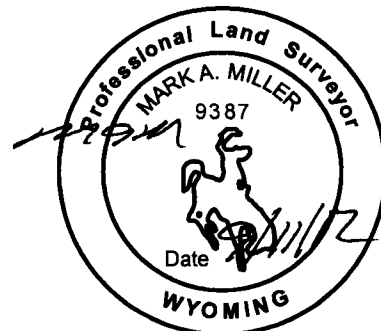
	1	2	3	4	5	6	7	8	9	10	11	12	13	14	15	16	17	18	19	20	21	22	23	24	25		
A																											A
B	+	+	+	+	+	+	+	+	+	+	+	+	+	+	+	+	+	+	+	+	+	+	+	+	+	+	B
C		6																									C
D	+	+	+	+	+	+	+	+	+	+	+	+	+	+	+	+	+	+	+	+	+	+	+	+	+	+	D
E																											E
F	+	+	+	+	+	+	+	+	+	+	+	+	+	+	+	+	+	+	+	+	+	+	+	+	+	+	F
G		7																									G
H	+	+	+	+	+	+	+	+	+	+	+	+	+	+	+	+	+	+	+	+	+	+	+	+	+	+	H
J																											J
K	+	+	+	+	+	+	+	+	+	+	+	+	+	+	+	+	+	+	+	+	+	+	+	+	+	+	K
L		18																									L
M	+	+	+	+	+	+	+	+	+	+	+	+	+	+	+	+	+	+	+	+	+	+	+	+	+	+	M
N																											N
O	+	+	+	+	+	+	+	+	+	+	+	+	+	+	+	+	+	+	+	+	+	+	+	+	+	+	O
P		19																									P
Q	+	+	+	+	+	+	+	+	+	+	+	+	+	+	+	+	+	+	+	+	+	+	+	+	+	+	Q
R																											R
S	+	+	+	+	+	+	+	+	+	+	+	+	+	+	+	+	+	+	+	+	+	+	+	+	+	+	S
T		30																									T
U	+	+	+	+	+	+	+	+	+	+	+	+	+	+	+	+	+	+	+	+	+	+	+	+	+	+	U
V																											V
W	+	+	+	+	+	+	+	+	+	+	+	+	+	+	+	+	+	+	+	+	+	+	+	+	+	+	W
X		31																									X
Y	+	+	+	+	+	+	+	+	+	+	+	+	+	+	+	+	+	+	+	+	+	+	+	+	+	+	Y
Z																											Z
	1	2	3	4	5	6	7	8	9	10	11	12	13	14	15	16	17	18	19	20	21	22	23	24	25		

Firm/Agency, Address

Mark Miller, PLS 9387
LW Survey Co.
12345 W. Alameda Parkway
Suite 205
Lakewood, CO 80228
Telephone Number: (303) 658-0358

This corner record was prepared by me or under my direction and supervision.

SEAL & SIGNATURE



RECORDED 9/25/2012 AT 11:56 AM REC# 599592 BK# 2296 PG# 880
DEBRA K. LATHROP, CLERK OF LARAMIE COUNTY, WY PAGE 1 OF 1

Corner Name South Quarter Corner Section 23, T 13 N, R 63 W, 6th P.M. Cross-Index No.: R-19

County: Laramie Wyoming

SBRPEPLS/PLSW: March 1994; PLSW January 1998